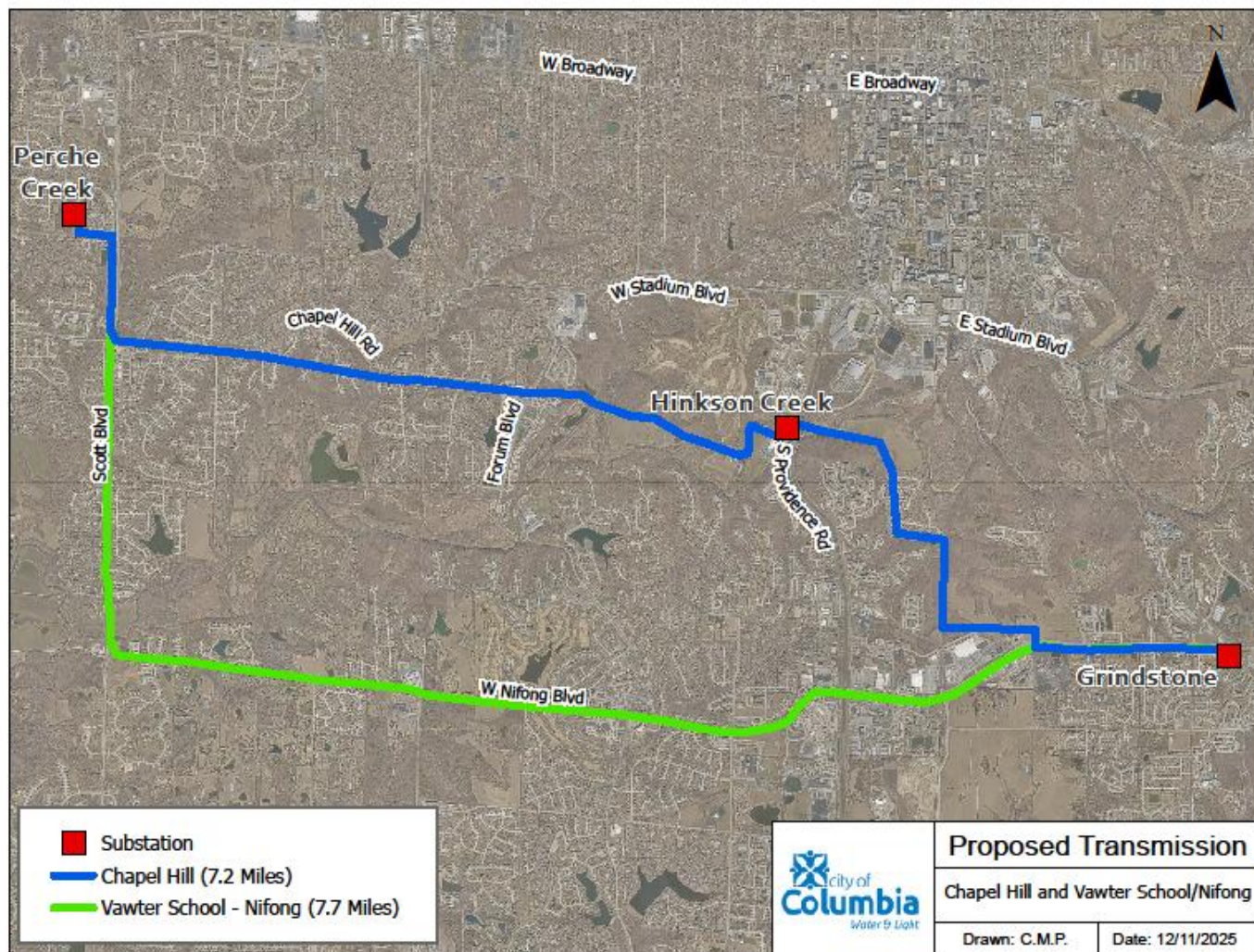


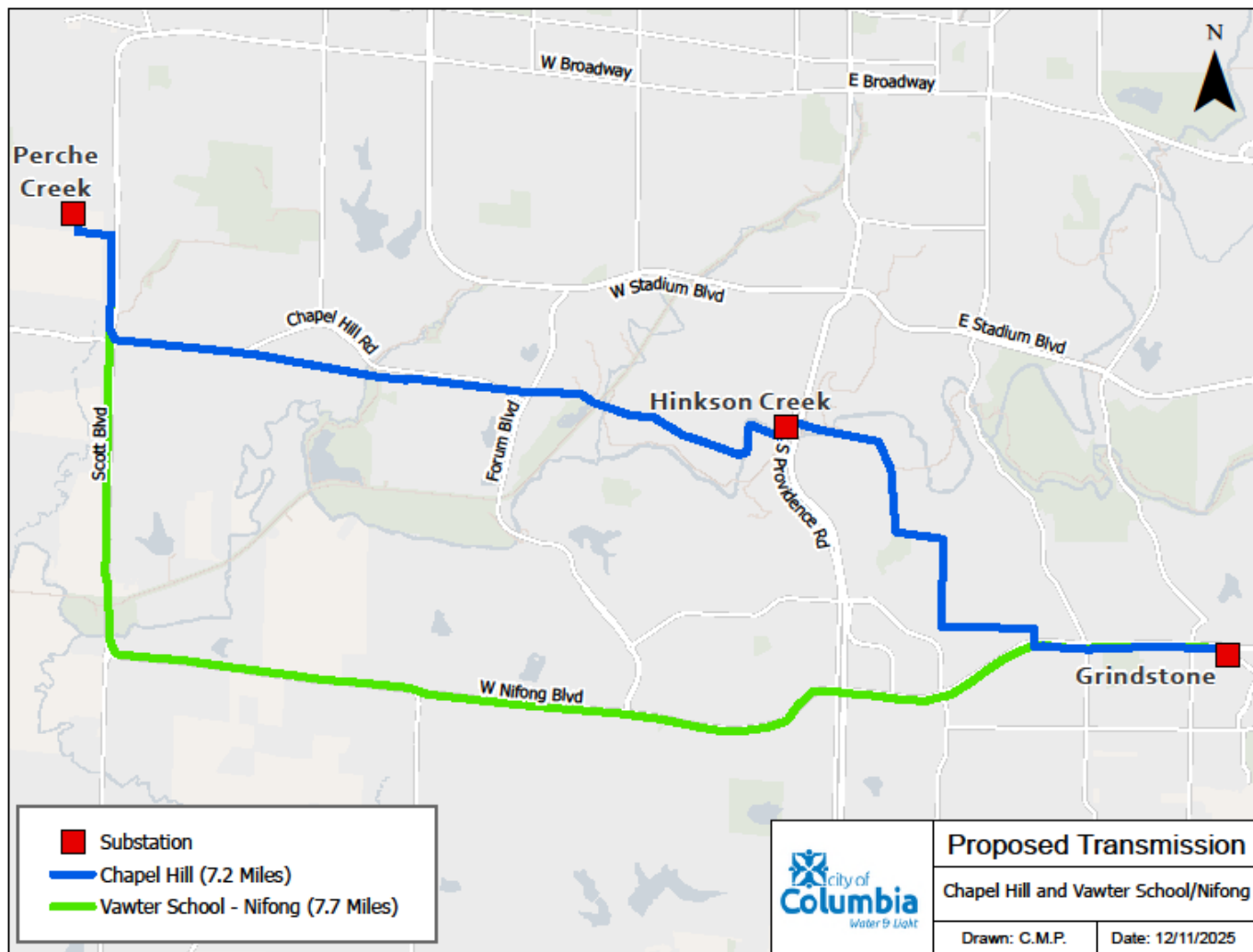
# City of Columbia Work Session

---

February 09, 2026 Agenda

- Overview of Proposed Transmission Routes
- Cost Comparison
- History and Associated Risks
- Schematic and Route Details
- Discussion





# Cost Comparison

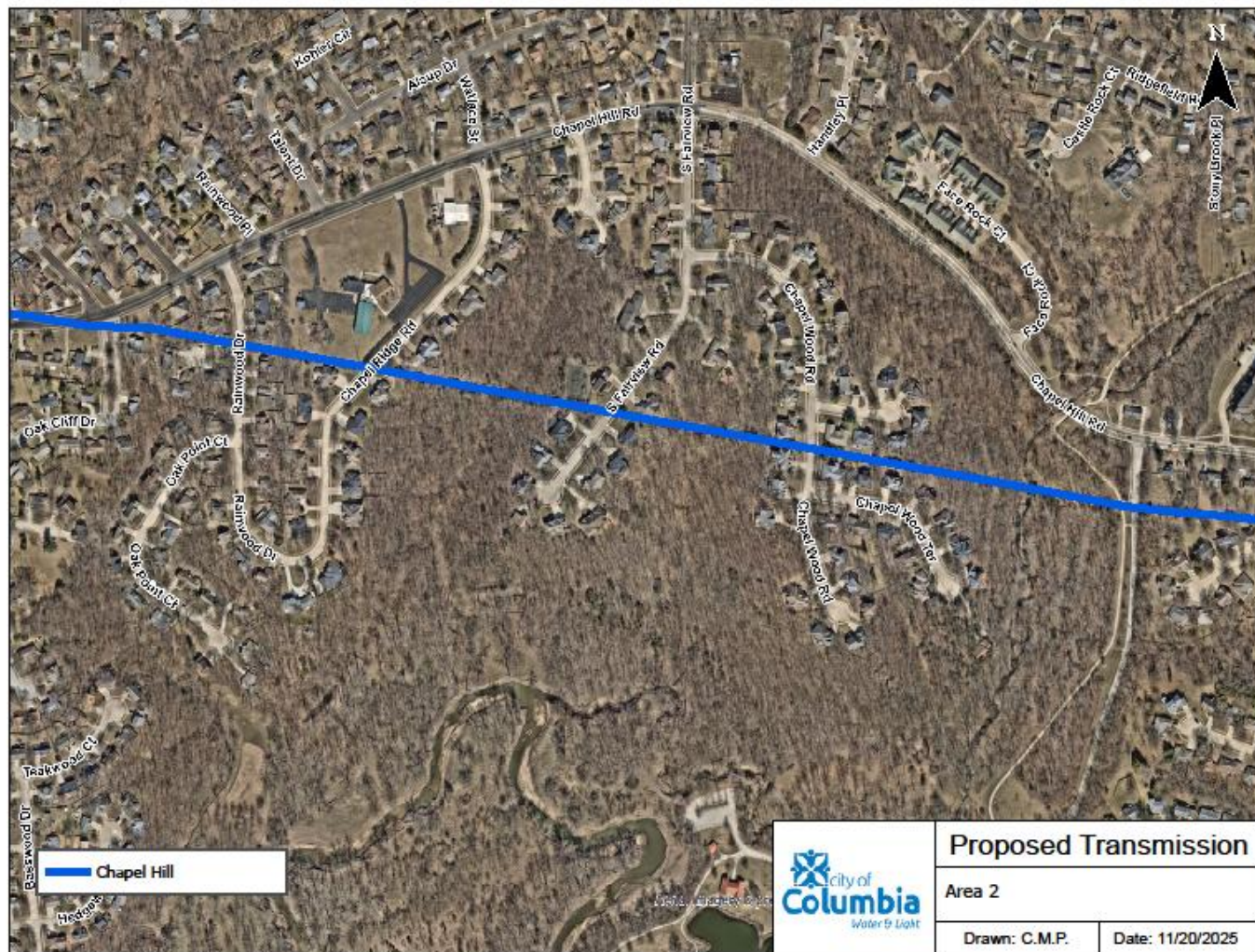
	Transmission	Distribution	Total
Chapel Hill	\$40,701,833	\$15,425,870	\$56,127,503
Vawter School	\$30,108,934	\$ 4,854,610	\$34,963,544

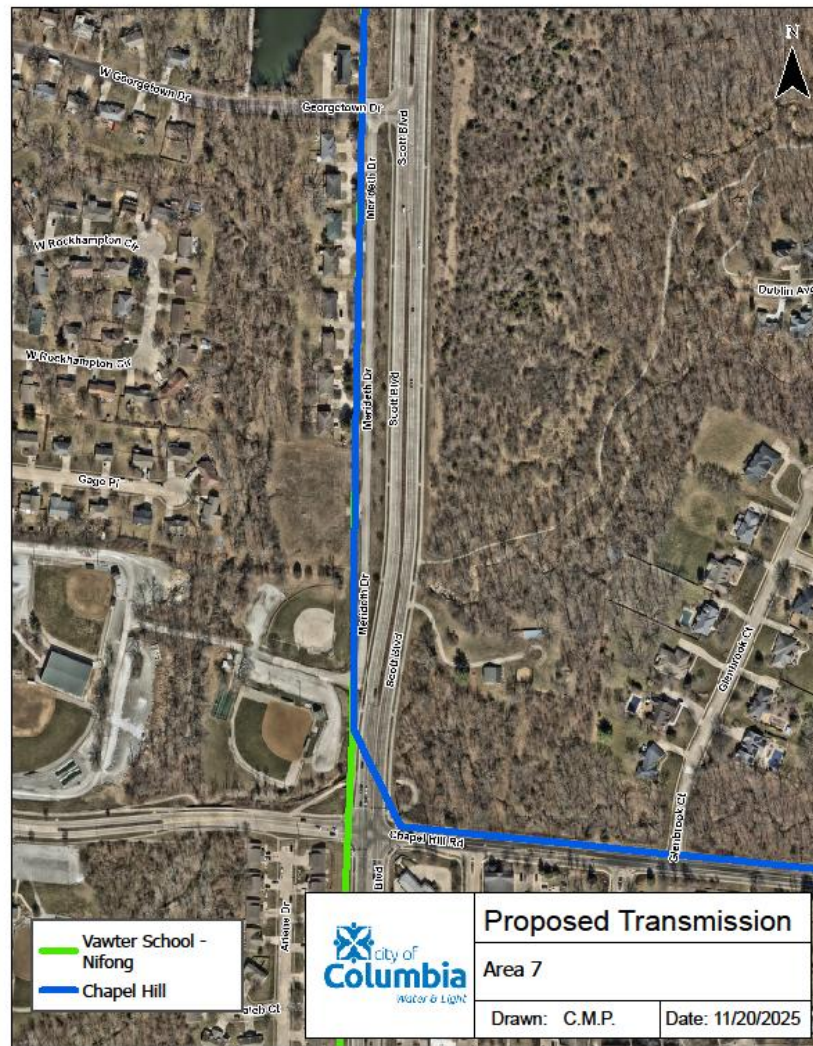
- Consultant provided Transmission estimate only
- Distribution Work Does Not Include Boone Electric Overhead Circuits
- Does not include Mill Creek Substation
- Remaining bond authority: \$29,885,000













## Brandeis Ct.





## Chapel Woods Rd.



Chapel Hill Rd. near Grant Ln.















## Nifong Blvd. at Bedford Walk





## Nifong Blvd. at Boone Hospital South

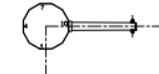


## Nifong Blvd. at Sinclair Rd. Roundabout

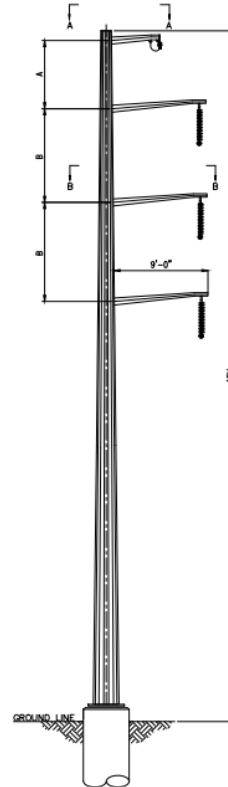




SECTION A-A




SECTION B-B



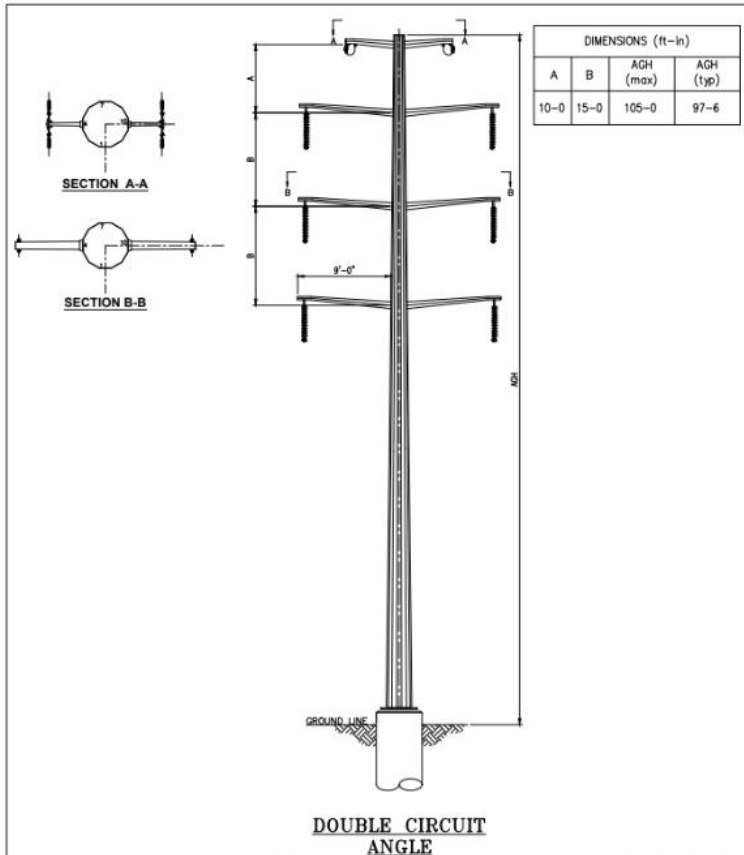
SINGLE CIRCUIT  
ANGLE

DIMENSIONS (ft-in)			
A	B	AGH (max)	AGH (typ)
10-0	15-0	115-0	100-6


ANSI A 8.5x11

 <b>BLACK &amp; VEATCH</b> <i>Building a world of difference</i>											
		DRAWN AM		A		10/31/2025		INITIAL RELEASE		AM MC TK	
CHECKED TK	DATE 10/31/2025	NO	DATE	REVISIONS AND RECORD OF ISSUE		DRN	DES	CHK	PDE	APP	
SINGLE CIRCUIT ANGLE				PROJECT 423354		DRAWING NUMBER COMO-VS-STR-002		REV A			
TRANSMISSION LINE STRUCTURE FRAMING				CODE		AREA		SHEET 1 OF 1			





DIMENSIONS (ft-in)			
A	B	AGH (max)	AGH (typ)
10-0	15-0	105-0	97-6

 <b>BLACK &amp; VEATCH</b> <i>Building a world of difference</i>													
		DRAWN AM		A		10/31/2025		INITIAL RELEASE		AM		MC TK	
CHECKED TK	DATE	10/31/2025	NO	DATE	REVISIONS AND RECORD OF ISSUE		DRN	DES	CHK	PDE	APP		
DOUBLE CIRCUIT ANGLE					PROJECT 423354		DRAWING NUMBER COMO-VS-STR-005		REV A				
TRANSMISSION LINE STRUCTURE FRAMING					CODE		AREA		SHEET 1 OF 1				

ANSI A 8.5x11

